

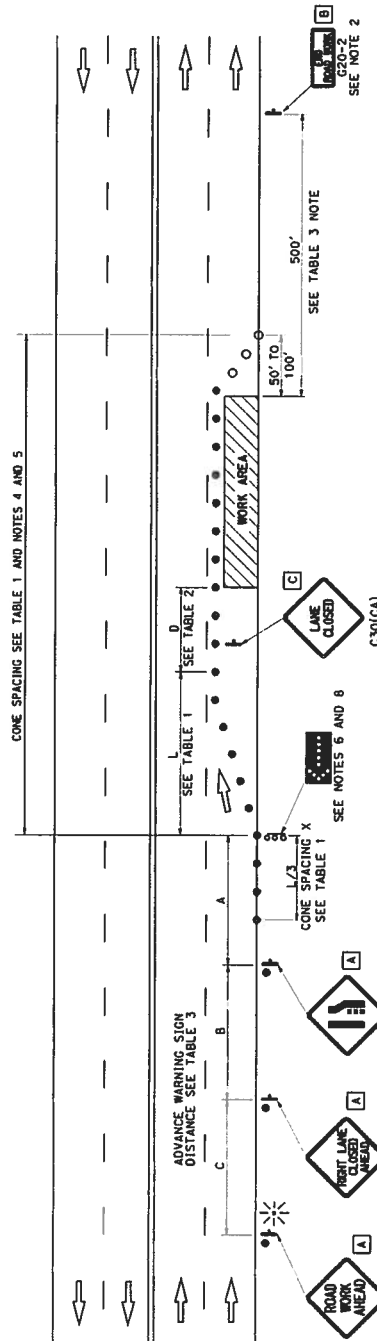
DIST.	COUNTY	ROUTE	POST MILES TOTAL	SHEET TOTAL

APPROVED: *[Signature]*
REGISTERED CIVIL ENGINEER

APR 11 19 2013
PLANS APPROVAL DATE

STATE OF CALIFORNIA
DIVISION OF HIGHWAYS
SAN FRANCISCO OFFICE
101 CALIFORNIA STREET, SUITE 200
SAN FRANCISCO, CA 94102

TO ACCOMPANY PLANS DATED _____



TYPICAL LANE CLOSURE

NOTES:
See Revised Standard Plan RSP T9 for tables.
Use cone spacing X for taper segment, Y for tangent segment or Z for conflict situations, as appropriate, per Table 1, unless X, Y, or Z cone spacing is shown on this sheet.
Unless otherwise specified in the special provisions, all temporary warning signs shall have black legend on fluorescent orange background. California codes are designated by (CA). Otherwise, Federal (MUTCD) codes are shown.

LEGEND

●	TRAFFIC CONE	○	TRAFFIC CONE (OPTIONAL TAPER)
⬇	TEMPORARY TRAFFIC CONTROL SIGN	⬆	FLASHING ARROW SIGN (FAS)
⬆	PORTABLE FLASHING BEACON	⬆	FAS SUPPORT OR TRAILER
⬆	PORTABLE FLASHING BEACON	⬆	PORTABLE FLASHING BEACON

SIGN PANEL SIZE (Min.)

A	48" x 48"
B	36" x 18"
C	30" x 30"

- NOTES:**
- Each advance warning sign shall be equipped with reflective sheeting. Each sign shall be at least 6" x 18" in size and be orange or fluorescent red-orange in color. Flashing beacons shall be placed at the locations indicated for lane closure during hours of darkness.
 - A G20-2 "END ROAD WORK" sign, as appropriate, unless the end of work area is obvious, or ends within a larger project's limits.
 - If the W20-1 sign would follow within 2000' of a stationary W20-1 or G20-1 "ROAD WORK NEXT MILES" sign, use a C20(CA) sign for the first advance warning sign.
 - All cones used for lane closures during the hours of darkness shall be fitted with retroreflective bands (or sleeves) as specified in the specifications.
 - Portable delineators, placed at one-half the spacing indicated for traffic cones, shall be used instead of cones for daytime closures only.
 - Flashing arrow sign shall be either Type I or Type II.
 - For approach speeds over 50 mph, use the "Traffic Control System for Lane Closure on Freeways And Expressways" plan for lane closure details and requirements.
 - A minimum 1500' or eight distance shall be provided where possible between the last advance warning flashing arrow sign. Lane closures shall not begin at the top of crest vertical curve or on a horizontal curve.
 - Place a C30(CA) sign every 2000' throughout length of lane closure.
 - Median lane closures shall conform to the details as shown except that C20(CA) and #4-ZL signs shall be used.
 - At least one person shall be assigned to provide full time maintenance of traffic control devices for lane closure unless, otherwise directed by the Engineer.

STATE OF CALIFORNIA
DEPARTMENT OF TRANSPORTATION

TRAFFIC CONTROL SYSTEM FOR LANE CLOSURE ON MULTILANE CONVENTIONAL HIGHWAYS

NO SCALE

RSP T11 DATED APRIL 18, 2013, SUPERSEDES STANDARD PLAN T11 DATED MAY 20, 2011 - PAGE 235 OF THE STANDARD PLANS BOOK DATED 2010.

REVISED STANDARD PLAN RSP T11

COUNTY ROUTE LOT/BLK/SECT SHEET NUMBER
 REGISTERED CIVIL ENGINEER
 APRIL 19, 2013
 PLANS APPROVED DATE
 THE STATE OF CALIFORNIA PUBLIC UTILITIES COMMISSION
 THE STANDARD PLAN RSP T12
 THE STANDARD PLAN RSP T12
 THE STANDARD PLAN RSP T12

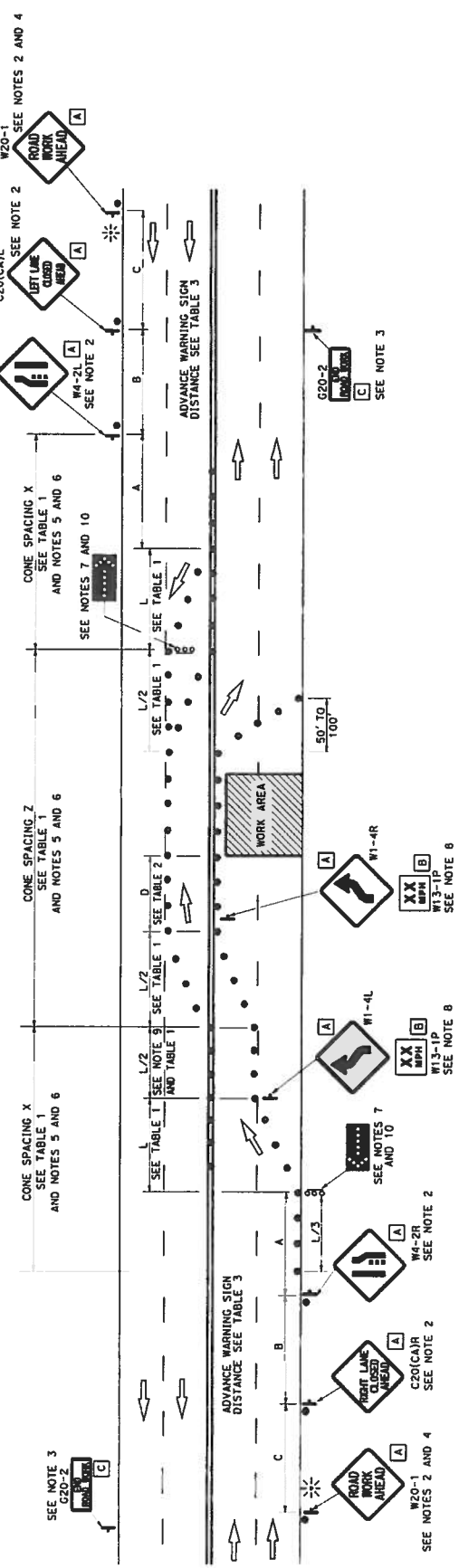
NOTES:
 See Revised Standard Plan RSP T9 for tables.
 Use cone spacing X for taper segment, Y for tangent segment or Z for spacing to end of cone, per Table 1, unless X, Y, or Z cone spacing is shown on this sheet.
 Unless otherwise specified in the special provisions, all temporary warning signs shall have black legend on fluorescent orange background. California codes are designated by (CA). Otherwise, Federal (MUTCD) codes are shown.

SIGN PANEL SIZE (Min)

A	48" x 48"
B	24" x 24"
C	36" x 18"

- LEGEND**
- TRAFFIC CONE
 - TEMPORARY TRAFFIC CONTROL SIGN
 - FLASHING ARROW SIGN (FAS)
 - FAS SUPPORT OR TRAILER
 - PORTABLE FLASHING BEACON

TYPICAL HALF ROAD CLOSURE



NOTES:

- At least one person shall be assigned to provide full time maintenance of traffic control devices to ensure they are maintained, otherwise directed by the Engineer.
- Each advance warning sign in each direction shall be placed at the end of the taper segment. Each sign shall be at least 16" x 16" in size and shall be orange or fluorescent red-orange in color. Flashing beacons shall be placed at the locations indicated for lane closure during hours of darkness.
- A G20-2 "END ROAD WORK" sign, as appropriate, shall be placed at the end of the work area, or ends within a larger project's limits.
- If the W20-1 sign would follow within 200' of a stationarity, W20-1 or G20-1 "ROAD WORK NEXT AHEAD" sign for the first advance warning sign.
- All cones used for lane closure during the hours of darkness shall be reflective and shall have reflective bands (or sleeves) as specified in the specifications.
- Portable delineators, placed at one-half the spacing indicated for traffic cones, may be used instead of cones for daytime closures only.
- Flashing arrow signs shall be either Type I or Type II.
- Advisory speed will be determined by the Engineer. The W13-IP Plaque will not be required when advisory speed is more than the posted or maximum speed limit.
- Unless otherwise specified in the special provisions, the tangent (L/2) shall be used.
- A minimum 1500' of sight distance shall be provided where possible for vehicles approaching the first flashing arrow sign. Lane closures shall not begin at the top of crest vertical curve or on a horizontal curve.

STATE OF CALIFORNIA
 DEPARTMENT OF TRANSPORTATION

TRAFFIC CONTROL SYSTEM FOR HALF ROAD CLOSURE ON MULTILANE CONVENTIONAL HIGHWAYS AND EXPRESSWAYS

NO SCALE

RSP T12 DATED APRIL 19, 2013. SUPERSEDES STANDARD PLAN T12 DATED MAY 20, 2011 - PAGE 240 OF THE STANDARD PLANS BOOK DATED 2010.

REVISED STANDARD PLAN RSP T12